

Curbside Recycling



REDUCE

REUSE

RECYCLE

Anthony Goodnight, Director
Public Works & Engineering Services

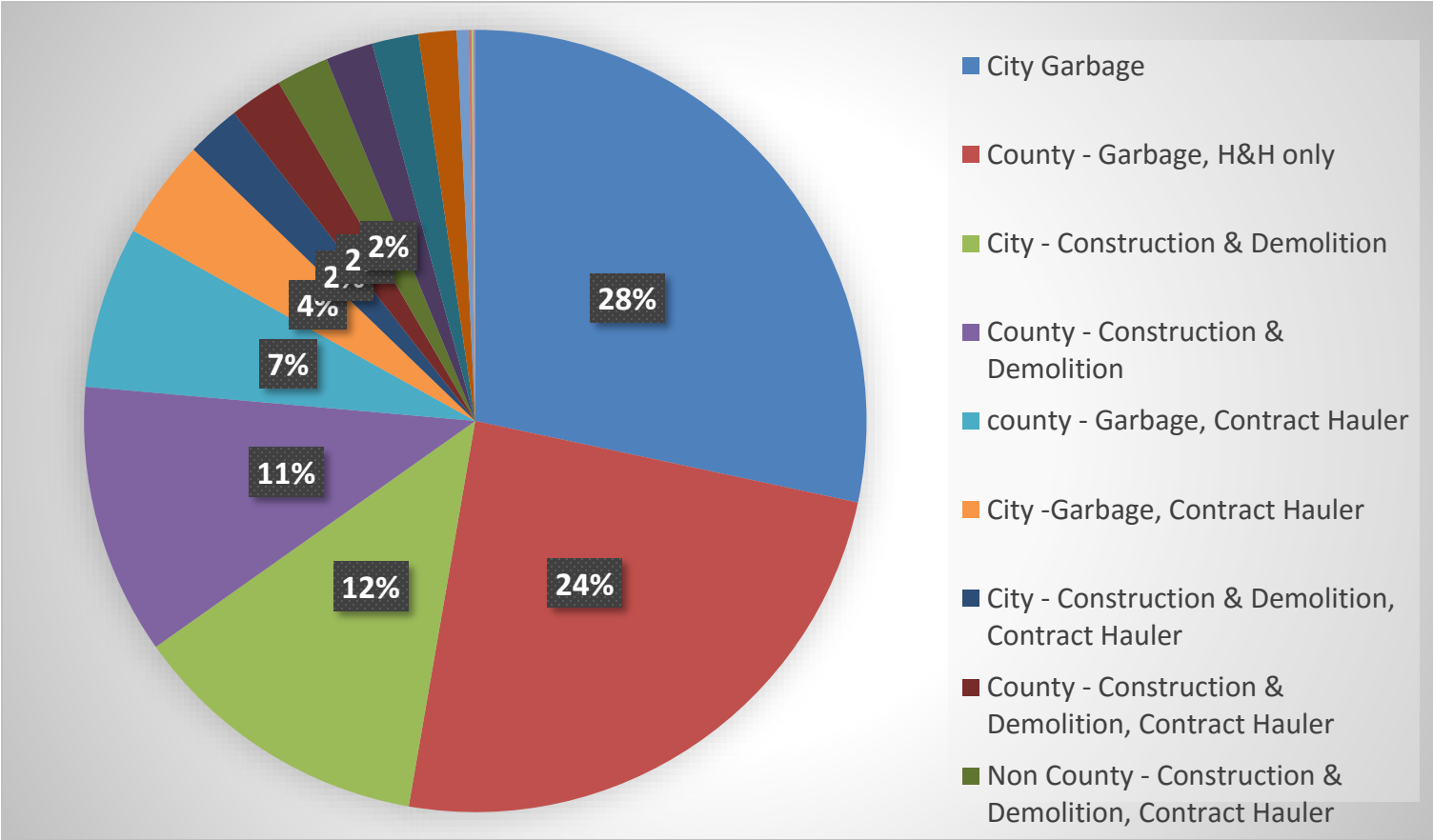


Presentation Outline

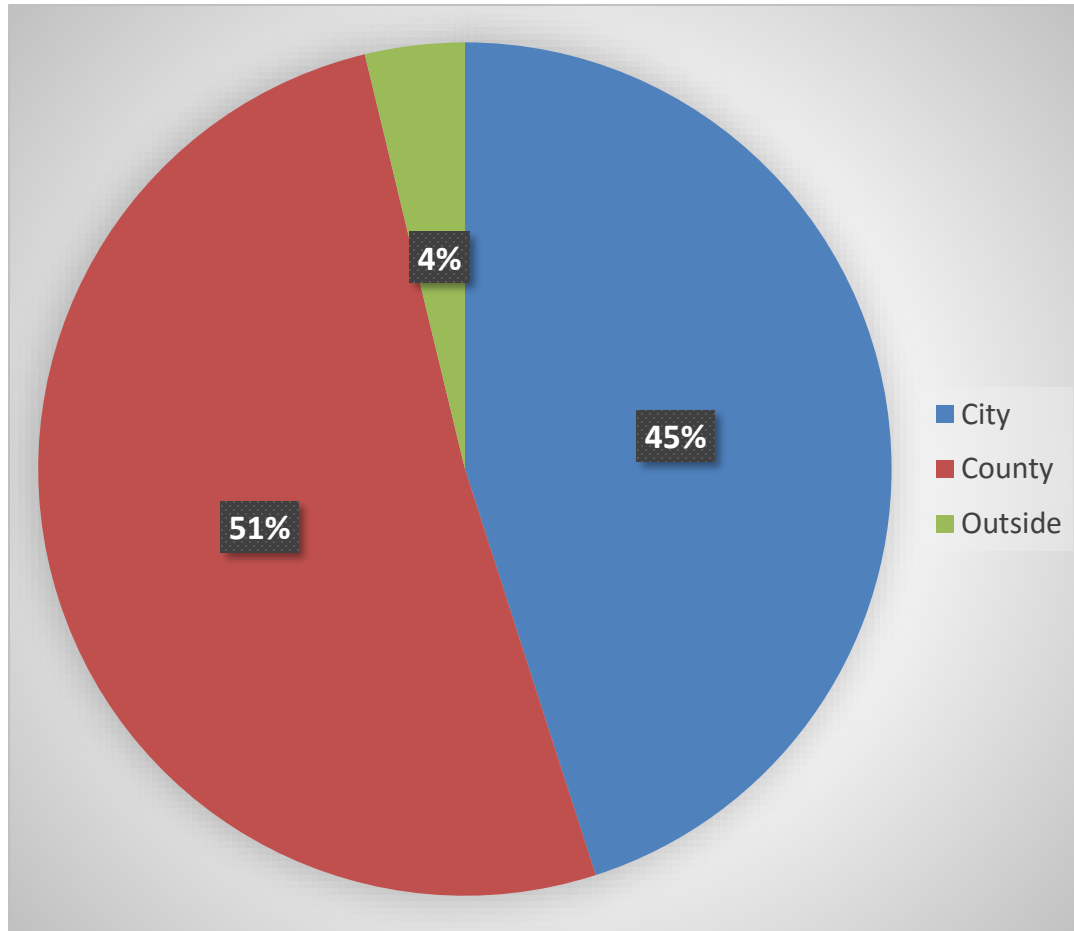
- 2016 Landfill Waste Volumes
- 2016 Landfill Revenue and Sources
- Estimated Landfill Life
- Benefits of Recycling
- City of Huntington Curbside Recycling
- Ordinance Revisions
- What are our options?



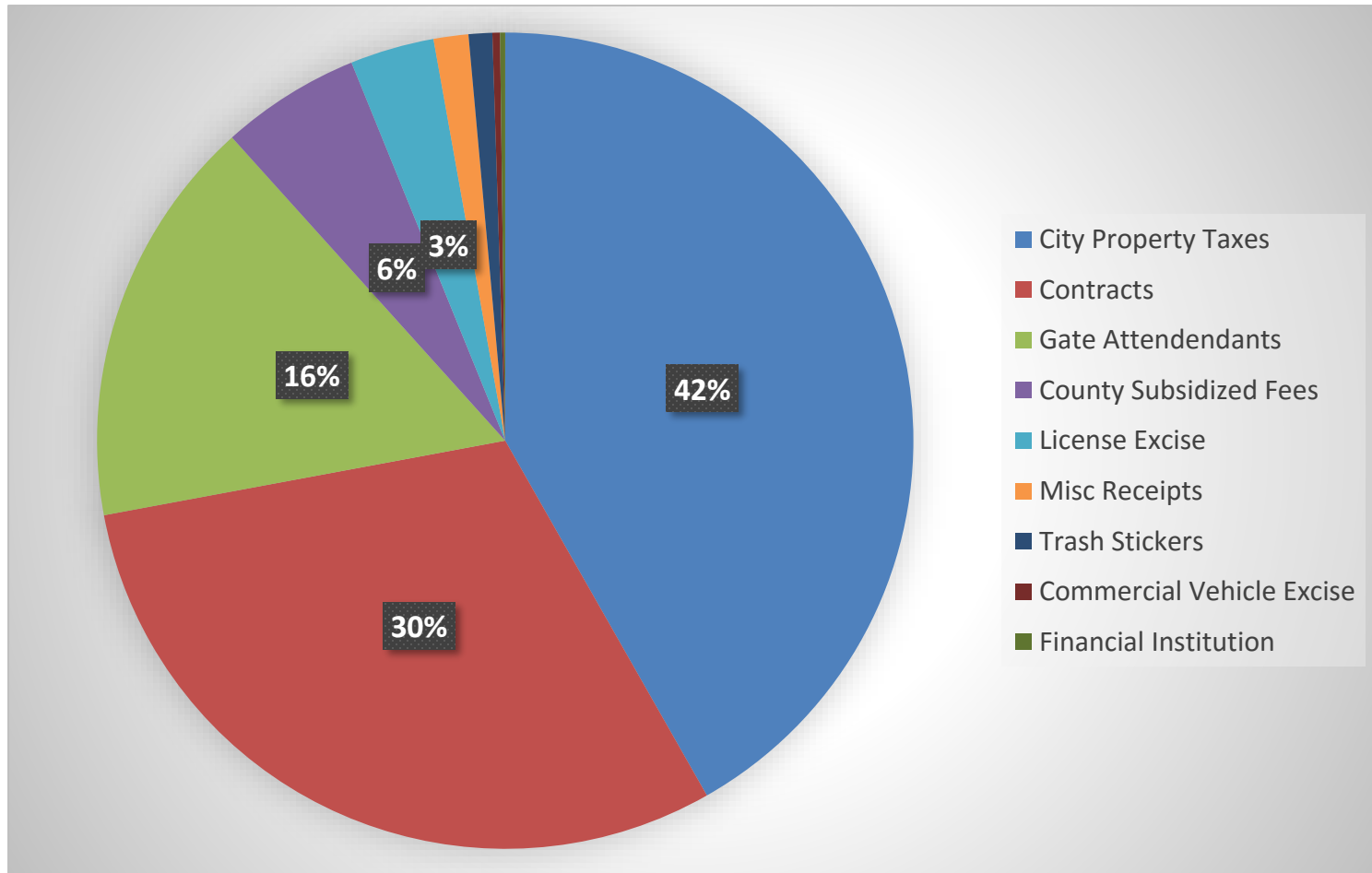
2016 Waste Totals



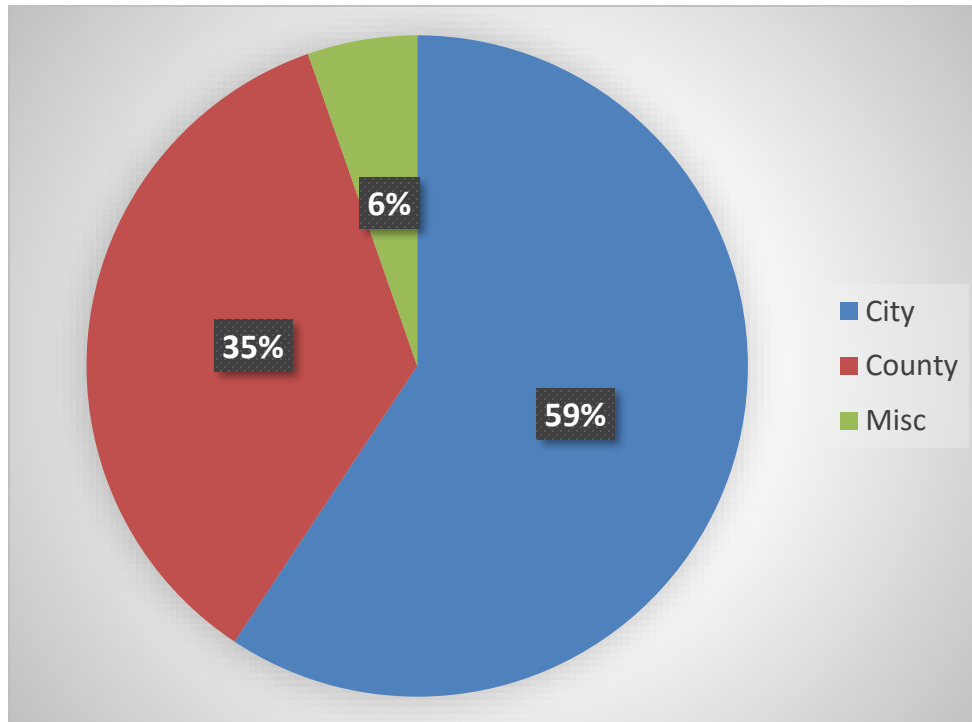
2016 Waste Source



2016 Revenue Totals



2016 Operating Revenue Totals



City

- Property Taxes
- Contract Haulers
- Gate Attendants
- Orange Sticker Program
- License Excise

County

- Contract Haulers
- Gate Attendants
- Subsidized Fee from Solid Waste

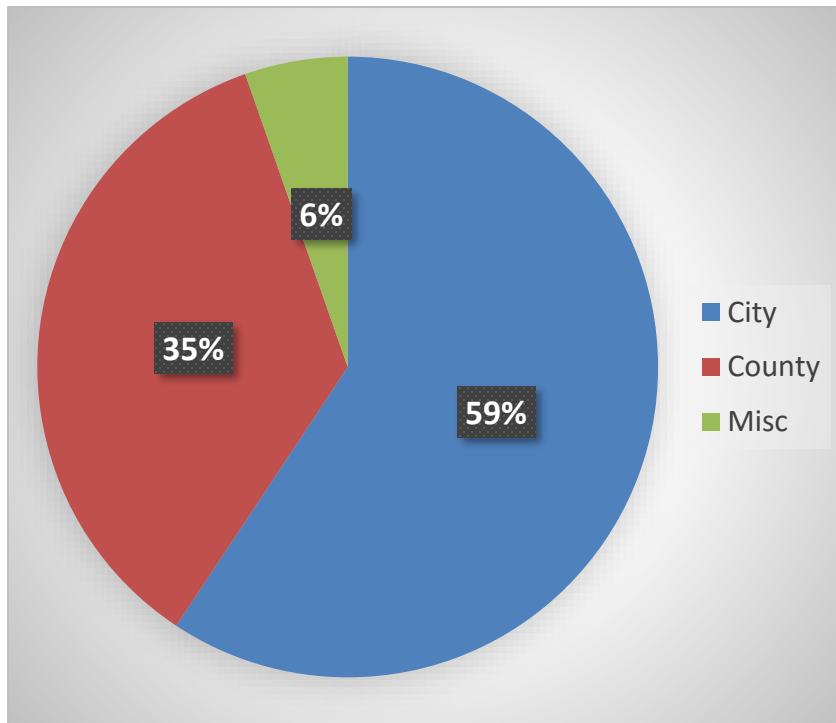
Misc.

- Commercial Vehicle Excise
- Financial Institution
- Misc. Receipts

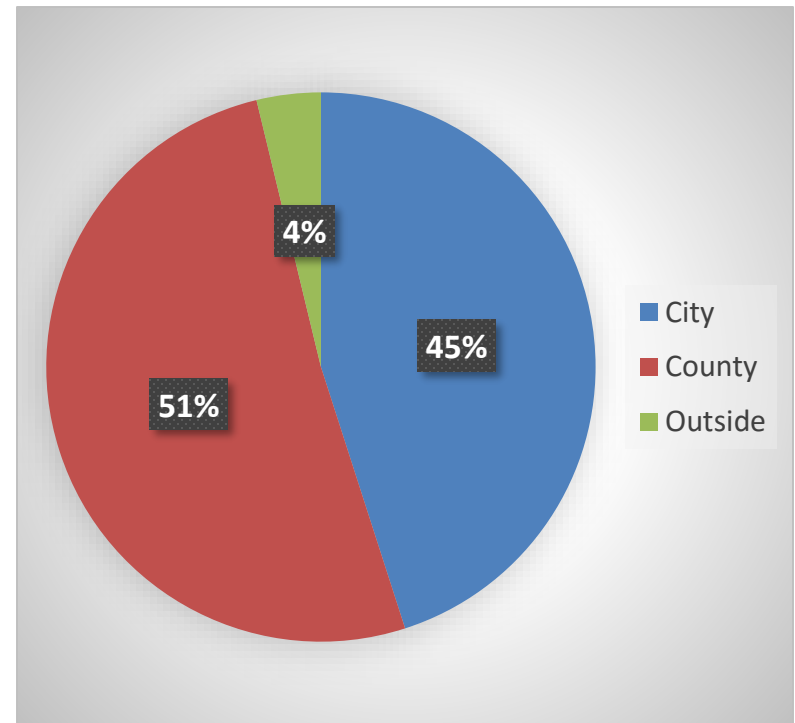


2016 Revenue vs. Waste Totals

Revenue



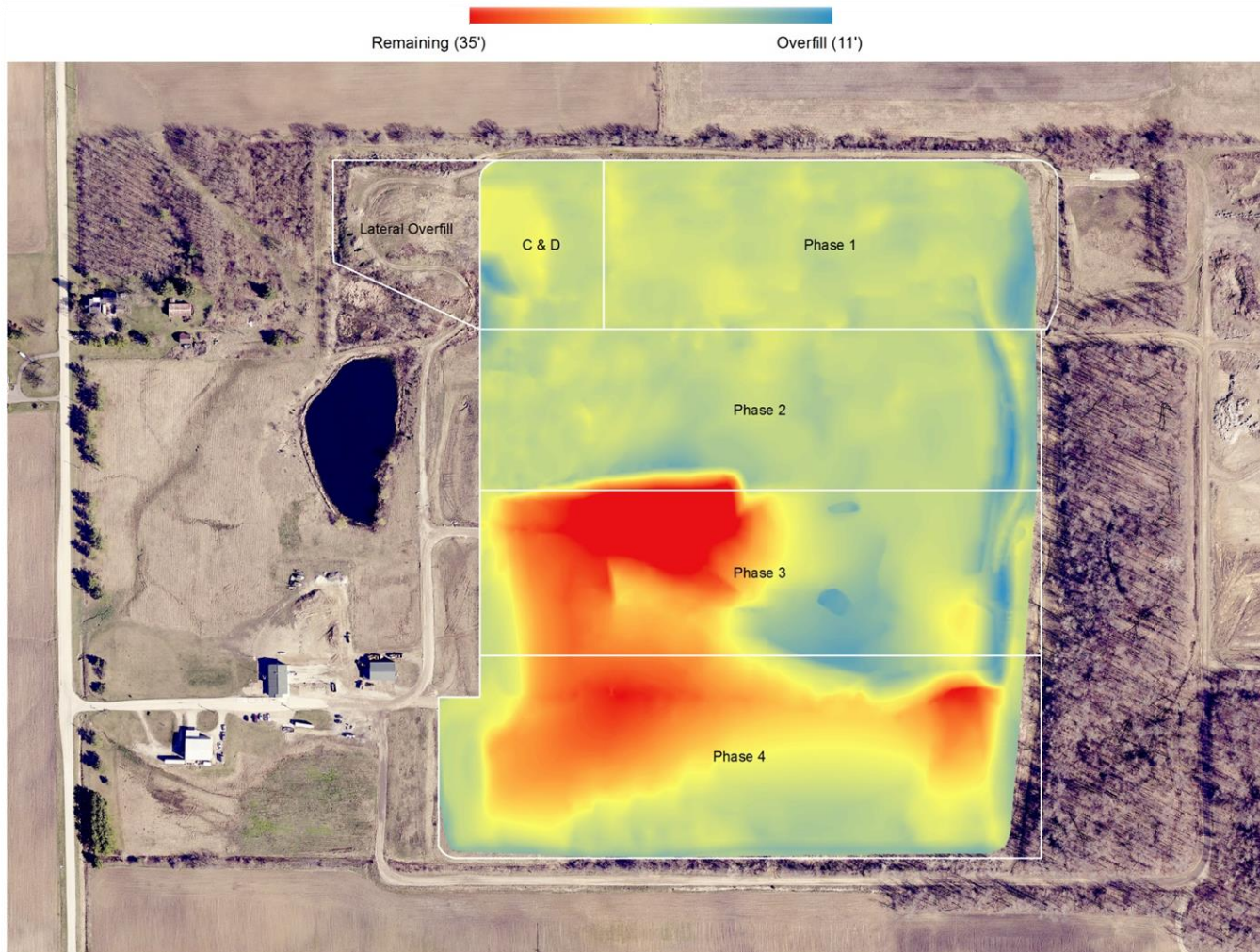
Waste Totals



Total 2016 Revenue - \$905,011



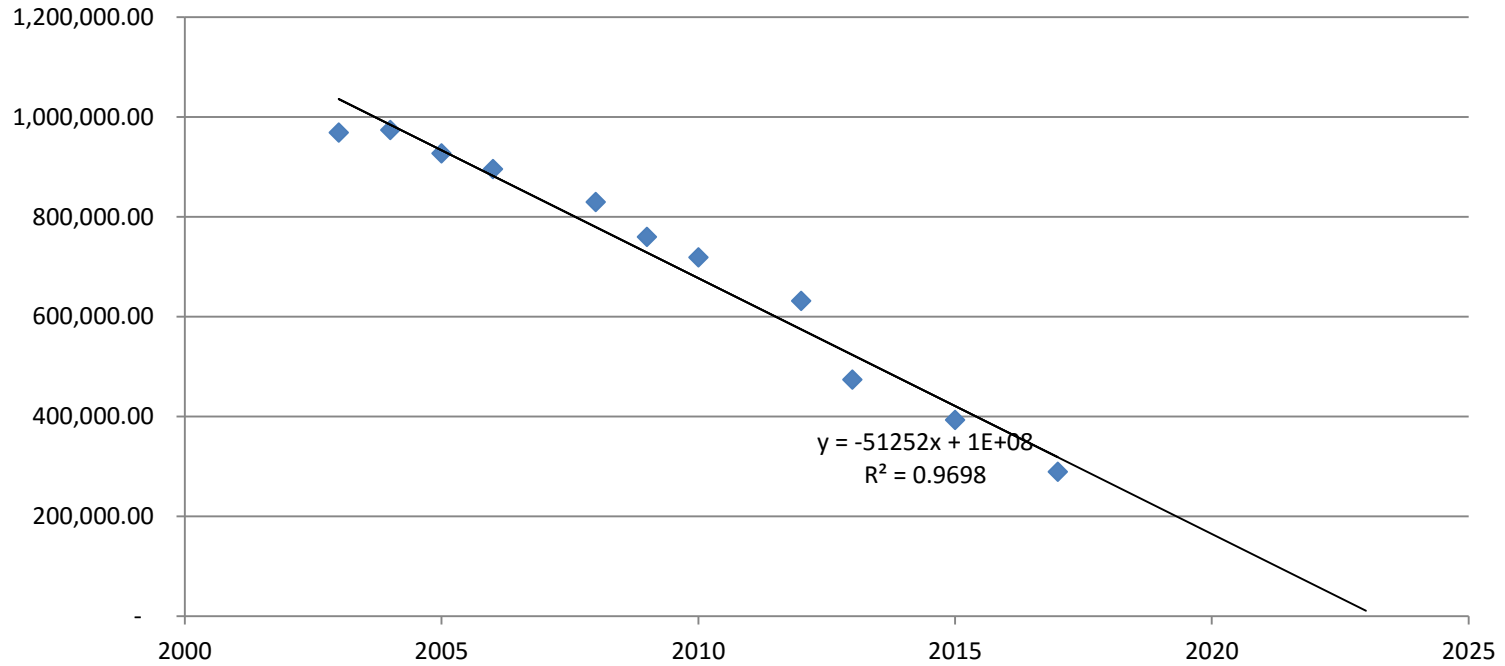
Landfill life



WE SERVE HUNTINGTON



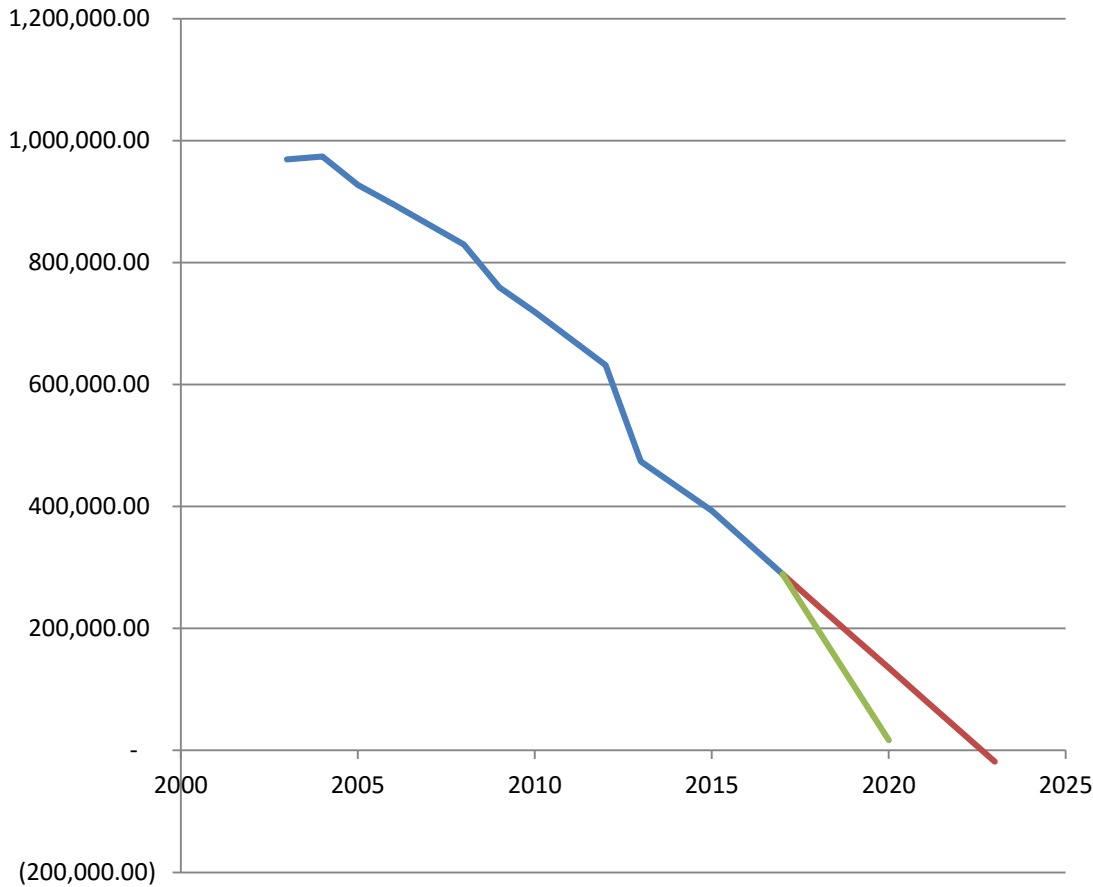
Landfill Life



$R^2=0.9698$ (Value of 1 = Perfect Correlation)



Projected Life



Worst Case – 3.19 Years
Best Case – 5.64 Years



Benefits of Recycling

- Reduces the amount of waste sent to landfills
- Conserves natural resources such as timber, water, and minerals
- Prevents pollution by reducing the need to collect new raw materials
- Saves energy
- Reduces greenhouse gas emissions that contribute to global climate change
- Helps sustain the environment for future generations
- Helps create new well-paying jobs in the recycling and manufacturing industries in the United States



Waste Reduction Impact

In 2014 about 258 million tons of municipal solid waste were generated. Of that 89 million tons were recycled or composted which is the equivalent to 34.6 percent recycling rate.

*Information from EPA.gov



City Recycling Impact

Recycling Impact (Starting Now)	Landfill Life Remaining	% Reduction in Total Waste
Average (Best Case)	5.64	-
+1SD (Worst Case)	3.19	-
15% Recycling	5.87	4%
25% Recycling	6.00	6%
35% Recycling	6.19	9%



Key Recycling Indicators

Waste audits have identified four basic features that drive performance.

- Cart Based Collection
- Automatic Service to all residents
- Single-stream collection
- Community actions that raised the priority of recycling

*Information from The 2016 State of Curbside Recycling Report
Presented by The Recycling Partnership



Program Highlights

- Single-Stream program
- Curbside Recycling “Every Other Week”
- Contractor to provide 90+ gallon wheeled container
- City residents required to participate
- User fee placed on utility bill
- Commercial Businesses can “opt in”
- Five-Year contract through BPW&S

MORE CONVENIENCE.

Residents can more easily fit all of their recyclables into one container, then simply roll those items to the curb.



Types of Materials Accepted

- #1 through #7 Plastics (excluding #6 – Styrofoam)
- Broken Down Cardboard
- Clean Steel, Aluminum, bi-metal cans
- Paper
- Clear, Brown and green glass bottles and jars



SPI Resin Identification Code	1	2	3	4	5	6	7
Type of Resin Content	PET	HDPE	Vinyl	LDPE	PP	PS	OTHER
<ul style="list-style-type: none"> • PET - Polyethylene Terephthalate • HDPE - High-density Polyethylene 	<ul style="list-style-type: none"> • LDPE - Low-density Polyethylene • PP - Polypropylene 				<ul style="list-style-type: none"> • PS - Polystyrene • Other - Mixed Plastics 		



Unacceptable Materials

- Hazardous Wastes
- Garbage or Rubbish
- Compostable's
- Broken Glass
- Plastic Shopping bags
- Motor Oil, paint, light bulbs, etc.
- Plastic Film
- Foam, Polystyrene, packing peanuts, etc.
- Needles, Syringes, or medical waste
- Electronic Waste (E-Waste)

Unacceptable Items



• Needles & Medical Waste
DO NOT place used needles or any other medical waste with recycling! This is a serious health hazard to everyone!

- Broken glass
- Windows, mirrors, ceramics
- Drinking glasses
- Aluminum foil
- Scrap metal
- Clothing hangers (metal and plastic)
- Plastic tableware (knives, forks, spoons, etc.)
- Plastic grocery bags
- Light bulbs
- Food soiled material
- Wet papers or cardboard
- Paperboard juice and milk containers
- Plastic food wrappers
- Used paper towels or tissues
- Styrofoam
- Pool chemicals
- Packing peanuts
- Plastic bubble wrap
- Hose
- Christmas lights
- Diapers
- Food waste

REV08/2013

Ordinance Revisions

- Require Mandatory participation by residents
- Will require communities, that deposit in the City landfill, to have a mandatory curbside recycling program
- Convert waste billing from cubic yards to tons
- Place a user fee on utility bills (estimated \$3-\$5/month)

INCREASED RECOVERY.

Programs using carts, common suite of materials, strong outreach and other BMPs can recover 400-450 lbs/hh/yr.

400-450
LBS. PER
HOUSEHOLD
PER YEAR



What are our options

1. Do Nothing
2. Bid out recycling – Bid Documents are ready
(Not obligated to award contract)
3. Create additional drop-off recycling opportunities at other locations in the City.



Questions?

WE SERVE HUNTINGTON



Impact of Out of County Waste

Landfill lost 4.82 years of landfill life by accepting out of county waste from 2009-2016

Year	Out of County Waste (Tons)	In County Waste (Tons)	Average Ton Per Day	Years Remaining 2.35 CY/TON	Years Remaining 1.5 CY/TON
2009	3,073	19,466	86.69	17.6	22.4
2010	13,970	18,675	125.56	16.4	21.2
2011	27,850	19,151	180.77	14.7	19.5
2012	26,559	19,839	178.45	12.2	17.0
2013	7,222	18,527	99.03	9.8	14.5
2014	6,434	21,467	107.31	7.3	12.9
2015	6,036	29,400	136.29	4.9	10.9
2016	497	22,350	87.87		
Total	91,144	146,525	130.59		
Years Lost @19,000 Tons/Yr	4.82				

